



# Teen Masters SKILL37 (40uL)

<b>Oil Pattern Distance:</b>	<b>37 Feet</b>	<b>Reverse Brush Drop:</b>	<b>37 Feet</b>	<b>Oil Per Board:</b>	<b>40 uL</b>
<b>Forward Oil Total:</b>	<b>4.88 mL</b>	<b>Reverse Oil Total:</b>	<b>3 mL</b>	<b>Volume Oil Total:</b>	<b>7.88 mL</b>
<b>Forward Boards Crossed:</b>	<b>122 Boards</b>	<b>Reverse Boards Crossed:</b>	<b>75 Boards</b>	<b>Total Boards Crossed:</b>	<b>197 Boards</b>

	Start	Stop	Loads	Speed	Crossed	Start	End	Feet	T.Oil
1	2L	2R	2	18	74	0.0	2.5	2.5	2960
2	8L	8R	1	18	25	2.5	5.0	2.5	1000
3	9L	9R	1	18	23	5.0	7.5	2.5	920
4	2L	2R	0	18	0	7.5	26.0	18.5	0
5	2L	2R	0	22	0	26.0	33.0	7.0	0
6	2L	2R	0	30	0	33.0	37.0	4.0	0

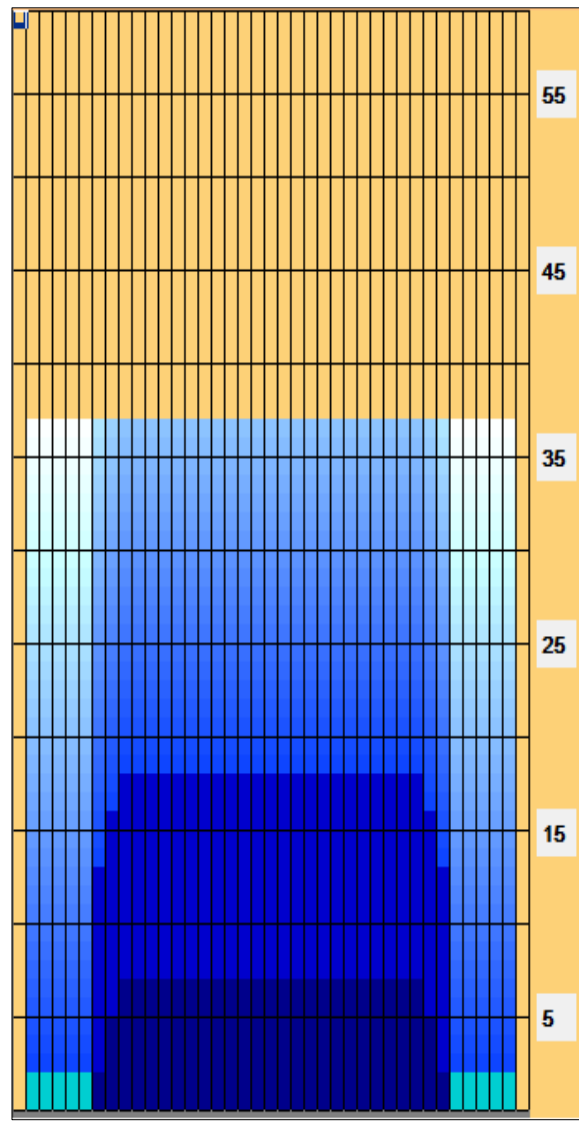
Navigation: Forward Reverse More

	Start	Stop	Loads	Speed	Crossed	Start	End	Feet	T.Oil
1	2L	2R	0	30	0	37.0	18.0	-19.0	0
2	9L	9R	1	18	23	18.0	15.5	-2.5	920
3	8L	8R	1	18	25	15.5	13.0	-2.5	1000
4	7L	7R	1	18	27	13.0	10.5	-2.5	1080
5	2L	2R	0	18	0	10.5	0.0	-10.5	0

Navigation: Forward Reverse More

Conditioner:  
TransferType:  
ANY

- Forward
- Reverse
- Combined
- Buff



Item	3L-7L:18L-18R	8L-12L:18L-18R	13L-17L:18L-18R	18L-18R:17R-13R	18L-18R:12R-8R	18L-18R:7R-3R
Description	Outside Track:Middle	Middle Track:Middle	Inside Track:Middle	Middle: Inside Track	Middle:Middle Track	Middle:Outside Track
Track Zone Ratio	3.18	1.06	1	1	1.06	3.18

